

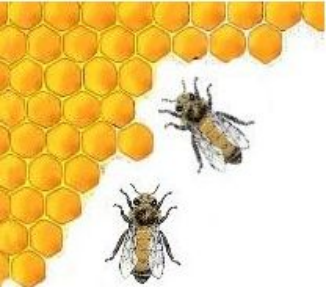
Monitoring of honeybee colony losses in Norway

Bjørn Dahle

Norwegian Beekeepers
Association



NORGES BIRØKTERLAG
STIFTET 1884



Questionnaire

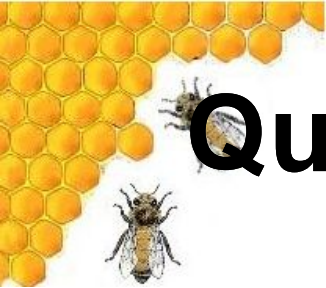
- +

- Annually since 1980
- Questionnaire returned by 10-20% of the members

- -

- Representative?
- Deadline for returning questionnaire: December
- Respondents can not be followed from one year to another

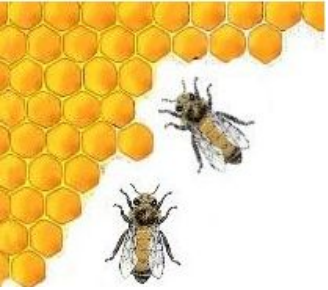




Questionnaires 2009 -onwards

- New homepage: “my page” for all members
 - COLOSS questionnaires for level 1-3
 - All apiaries registered by their GPS coordinate
 - Beekeeper software





Monitoring apiaries

- Questionnaire
 - # colonies wintered
 - # queenless colonies in spring
 - # colonies that died during winter
 - Suspected cause of death for each colony
 - Problems with Varroa, Nosema and Chalkbrood
- Sampling for Nosema (apis and ceranae) and honeybee viruses

