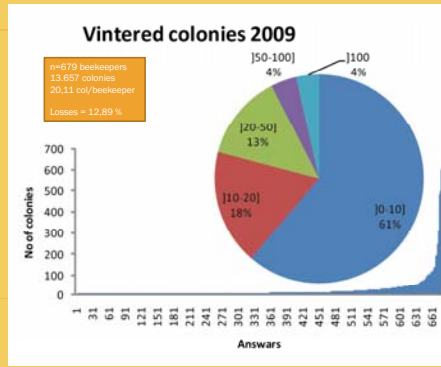




PRELIMINARY RESULTS. HONEY BEE LOSSES DENMARK 2009-2010

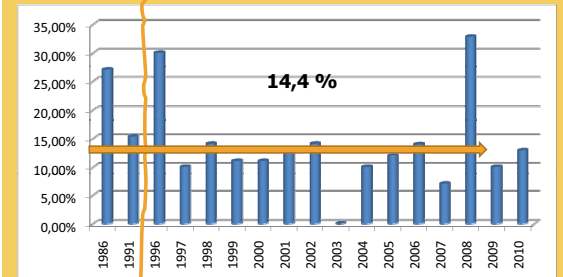


Flemming Vejsnæs
Danish Beekeepers Association.



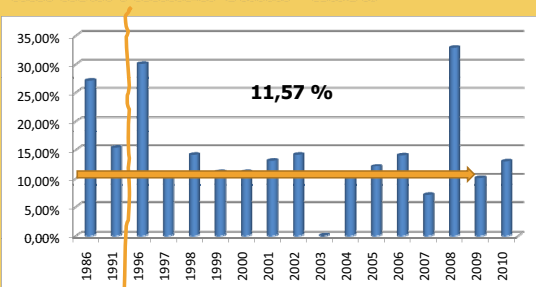
Danmarks Biavlerforening – Flemming Vejsnæs

COLONY LOSSES 1986 - 2010



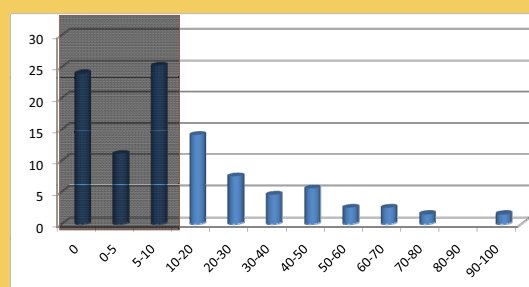
Danmarks Biavlerforening – Flemming Vejsnæs

COLONY LOSSES 1986 - 2010



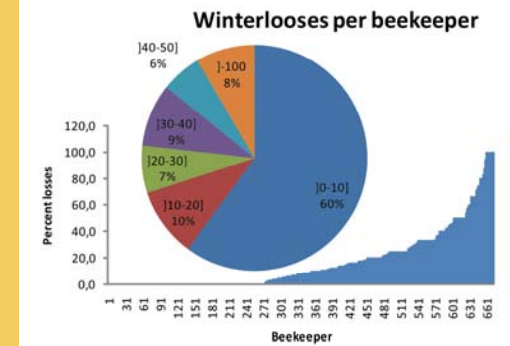
Danmarks Biavlerforening – Flemming Vejsnæs

60% OFF THE BEEKEEPERS HAVE LOW LOSSES

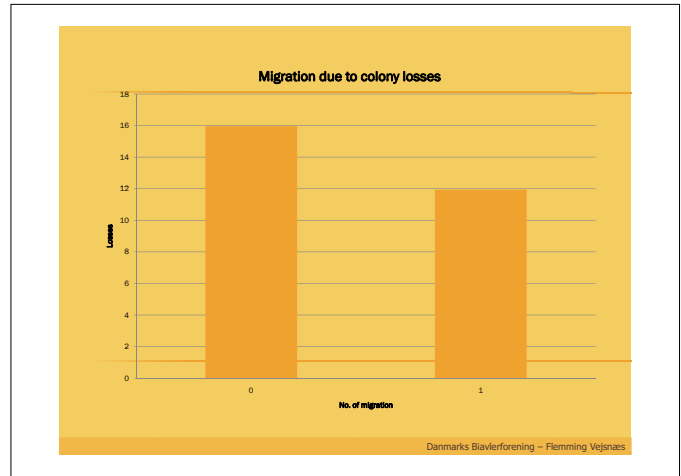
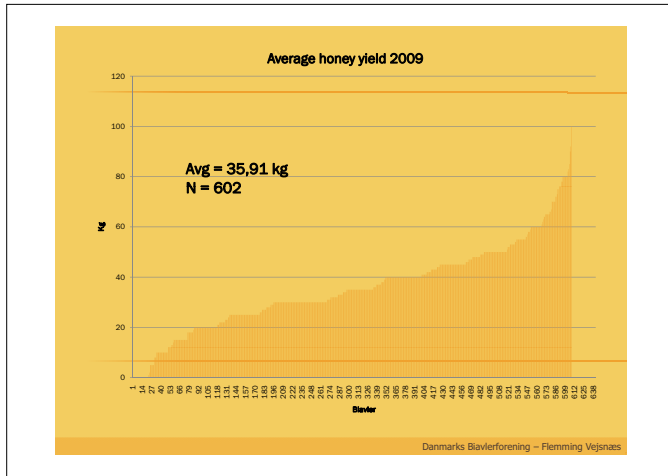
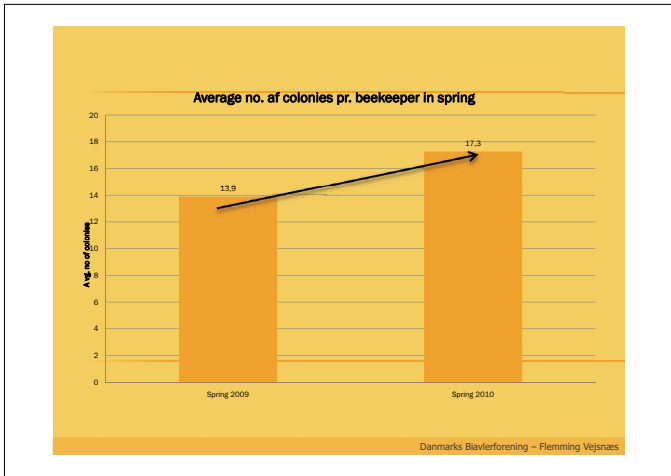
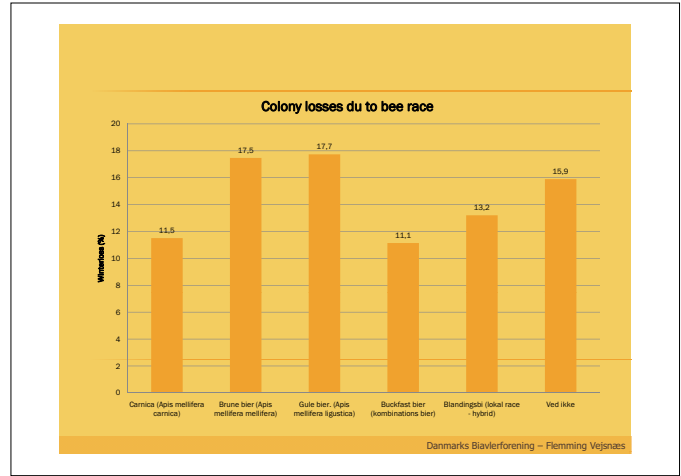
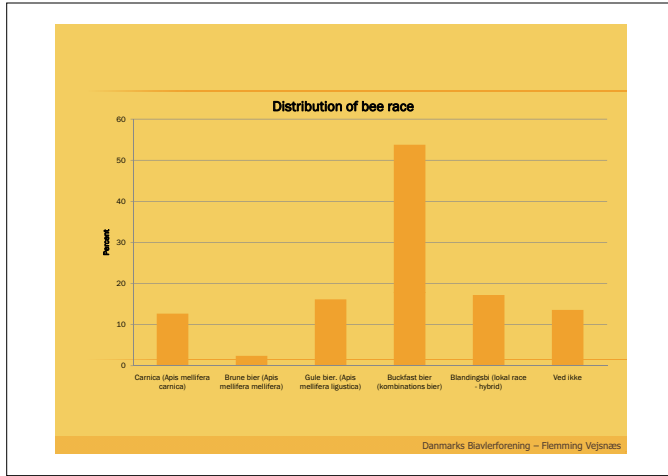
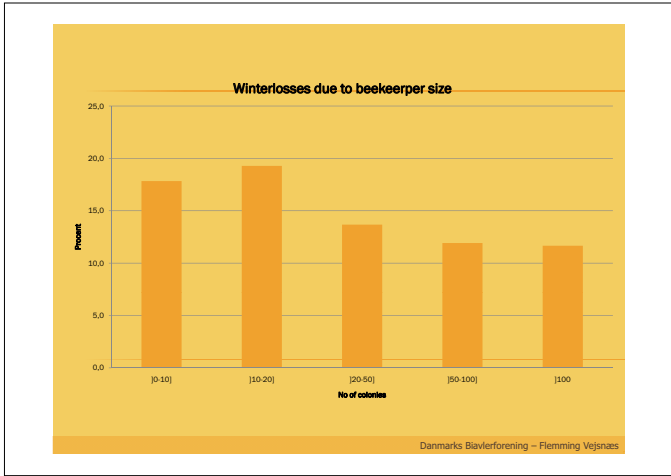


Danmarks Biavlerforening – Flemming Vejsnæs

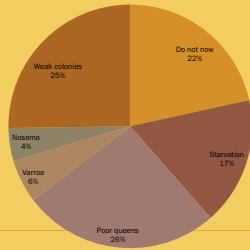
Giver ingen mening at beregne pr. biavler ?



Danmarks Biavlerforening – Flemming Vejsnæs



Beekeepers explanation

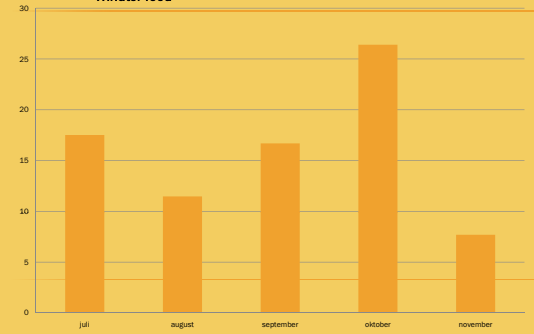


BEEKEEPER EXPLAIN

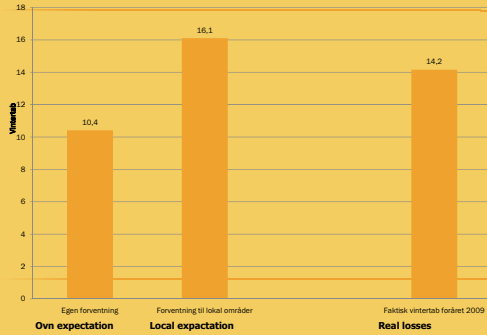
152 additional explanations

- Virus
- Mouse
- Snow
- Wasp
- Birds
- Vandalism
- Dysenteri

Winter feed



Expected losses



COMMON SENSE



Flemming Vejsnæs
Danish Beekeepers Association.

Basic Questionnaire EVALUATION IS NEEDED

- | | |
|--|-----------------------------------|
| E3 How many production colonies did you have at October 1 2009? | Case story
200 colonies |
| E4 How many production colonies did you have at April 19 2010? | 190 colonies |
| E5 How many spits or increases did you make/buy between October 1 2009 and April 19 2010? | 60 colonies |
| E6 How many of your colonies/splits did you sell or remove in this period? | 50 colonies |

Calculation ???

